

Link Operations and Maintenance Facility: East

System Expansion Committee

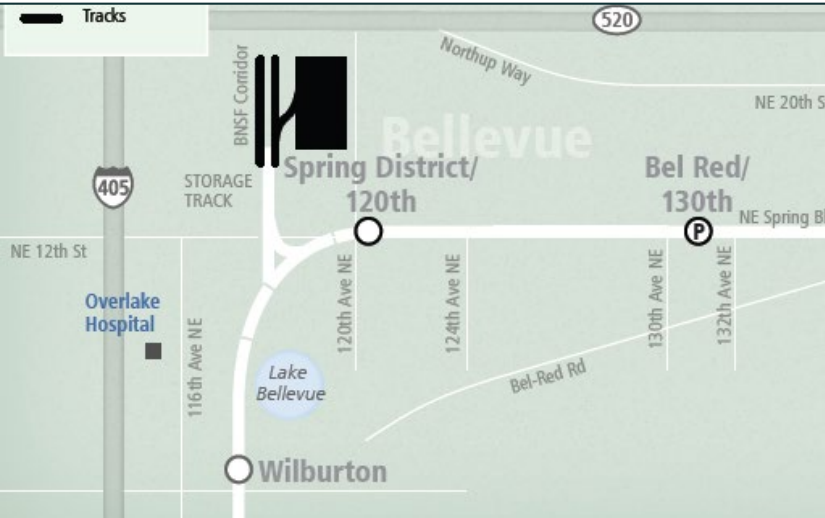
9/10/2020

Link Operations & Maintenance Facility: East



Link OMF East

Project Overview



- *Facility designed to service, deploy and store 96 LRVs – and maintain new mainline track, systems and stations*
- *Capacity of ~260 employees*
- *24/7, 365 day operation*
- *Design-build project, fully furnished*
- *Supports operation of East Link, Lynnwood, Downtown Redmond and Federal Way Link Extensions*



Link OMF East – Financial Snapshot

Project Baseline Budget	\$449.2 million
Committed	\$364.9 81%
Incurred	\$343.8 77%

Notes:

1. Year of Expenditure \$
2. Financials as of July 2020

~570,000 craft labor hours to-date

- 92% complete
- Contingency balance: 14.5% remaining
- Project baselined in July 2016, to be complete in December 2020

Link OMF East – Workforce utilization

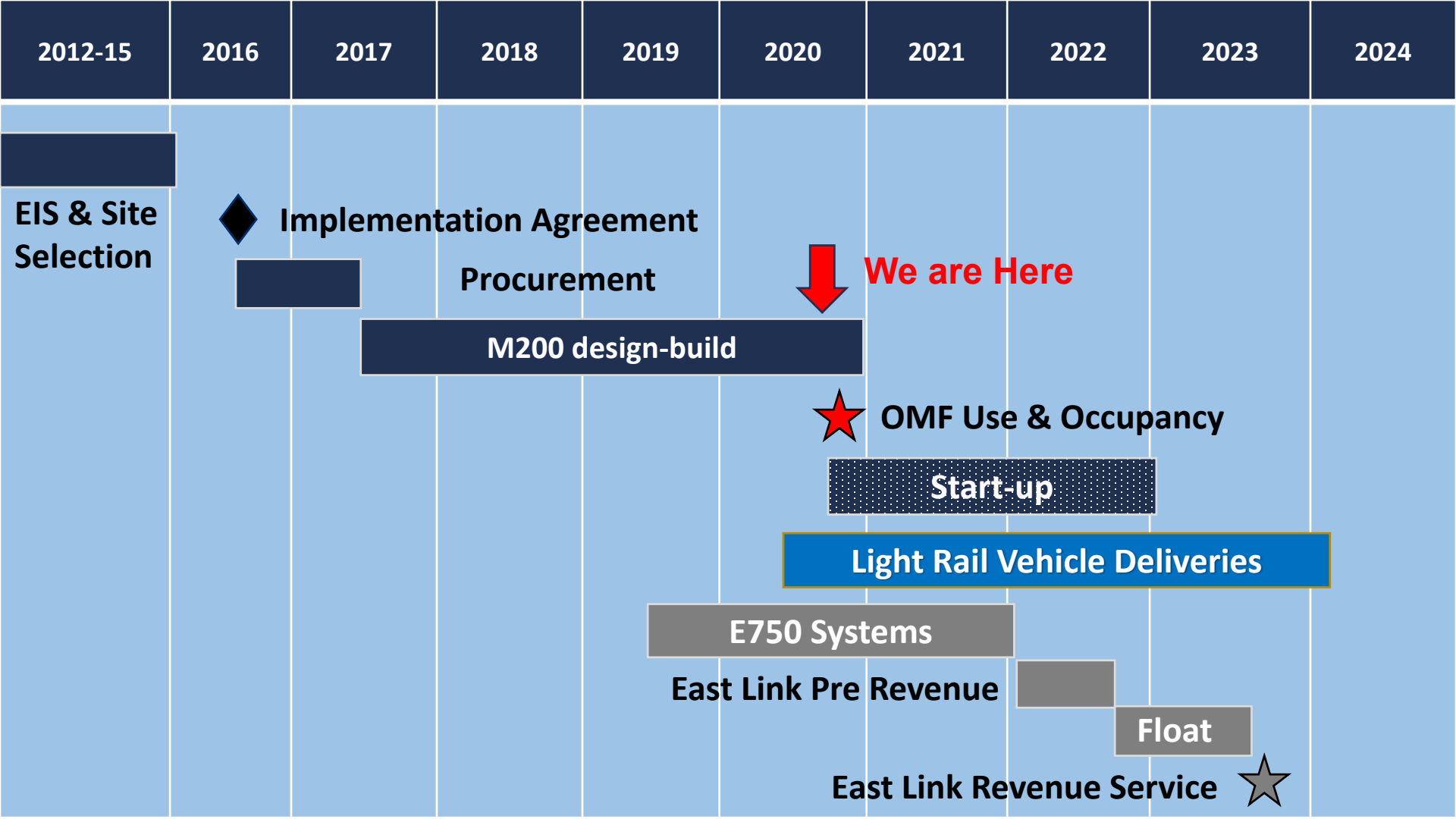
Apprentices		People of Color		Women	
20.3%	20% goal	25%	15% goal	3.8%	9% goal

~570,000 craft labor hours

Reported as of June 2020

Type	Design phase		Construction	
Small business enterprise	17.6%	12% goal	14.5%	12% goal
Disadvantaged business enterprise	6.3%	6% goal	12.2%	6% goal

- Design builder meets or exceeds contract specific and program-wide small and disadvantaged business or EEO goals except on gender



2012-15

2016

2017

2018

2019

2020

2021

2022

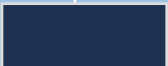
2023

2024

EIS & Site Selection



Implementation Agreement



Procurement



We are Here



M200 design-build



OMF Use & Occupancy



Start-up

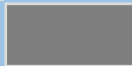


Light Rail Vehicle Deliveries



E750 Systems

East Link Pre Revenue



Float

East Link Revenue Service



Link OMF East – Remaining Work

Test and Commissioning phase

- *In progress:*
 - Installing equipment, building interior finishes
 - Commissioning systems such as heating/cooling, hoists, overhead power, switchgear
 - As-built Documentation
- *Up next:*
 - Dynamic testing with light rail vehicles on-site
 - Training maintenance personnel
 - Asset management, verification and establishment of schedules for long-term care and custody of new facilities
 - Hiring personnel including security and facility superintendents
- *Substantially Complete by November 2020*

LRV storage yard nearing completion

OMF East has over 5 miles of track



LRV storage area nearing completion

Connection to East Link mainline –
E335 contract

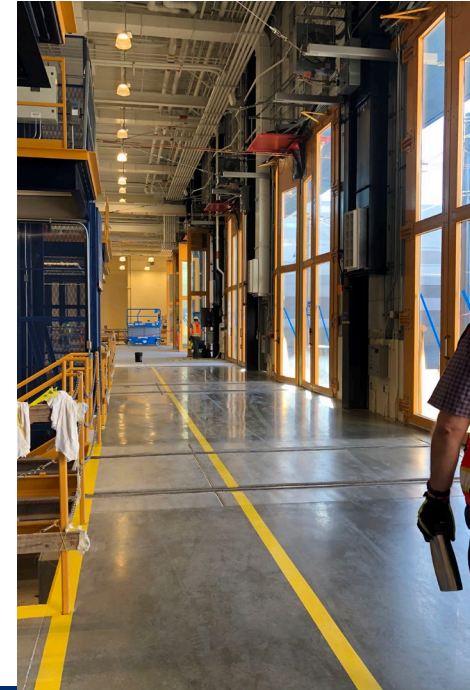
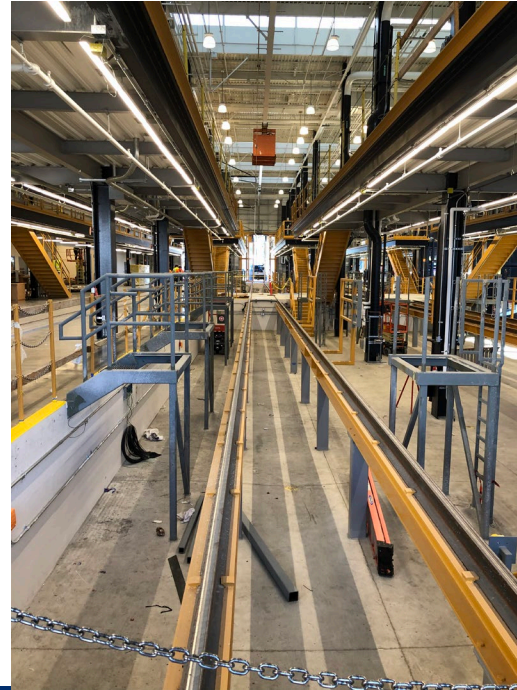


Vehicle monitoring, power, lighting, security systems and signs supported by ~ 300 poles across the 20-acre site

Operation and Maintenance Facility (OMF)

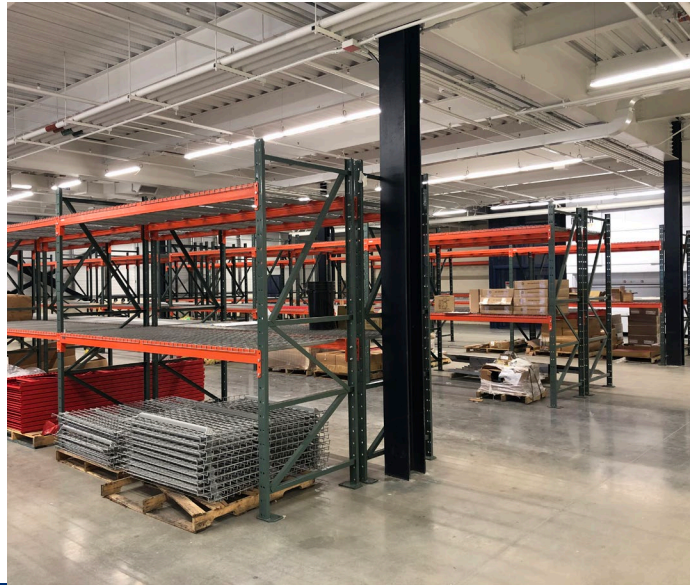
144,700 Square feet of shops and offices

Leadership in Energy and Environmental Design - seeking Gold Certification



The OMF Interior spaces

Interior Finish – project is fully furnished at completion,
includes installation of over 1,300 individual items such as shelving, tools,
equipment, and furniture



Exterior View, South Entry, 120th Ave NE



Exterior Finishes – Main Entrance



Exterior Finishes



100 kw
photovoltaic
solar array on
roof skylight
monitors



Maintenance of Way (MOW) Building

34,770 square feet of shops and offices



There are 7 overhead bridge cranes between the two buildings as well as 6 monorail hoists

Facility Perimeter

Main Entrance along 120th AVE NE

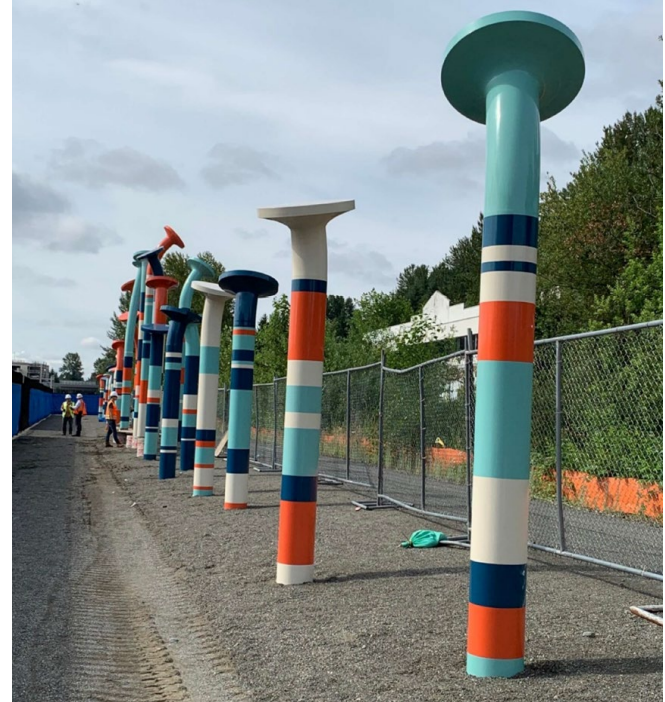


Interim Bike Trail



OMF East – Art Installation, Eastrail

“Nails”, 478’ long freestanding sculpture by Christian Moeller



Light Rail Vehicle (LRV) Fleet Expansion

21 of the 152 new LRVs ordered are in Seattle for testing

- Need to begin using OMF East yard capacity in Q1 2021
- LRV deliveries will continue into 2024



Path to Project Acceptance

Risks and Challenges:

- COVID-19 Impacts
- Managing unforeseen issues that may arise during system testing
- Balancing need for Sound Transit human and fleet resources across multiple projects
- Implementing and testing changes made to support Series 2 LRVs
- Training staff, preparing for use and maintenance

Next steps

Closeout property and utility easement actions with City of Bellevue	4 th Quarter 2020
Substantial Completion & Certificate of Occupancy	November 2020
Facility move-in ready	4 th Quarter 2020
Tie-in to expanded mainline track and systems	2022

Thank you.



 [soundtransit.org](https://www.soundtransit.org)

